

Return of Organization Exempt From Income Tax
 Under section 501(c), 527, or 4947(a)(1) of the Internal Revenue Code (except black lung benefit trust or private foundation)

2012

Department of the Treasury
 Internal Revenue Service

▶ The organization may have to use a copy of this return to satisfy state reporting requirements.

Open to Public Inspection

A For the 2012 calendar year, or tax year beginning and ending

B Check if applicable: <input type="checkbox"/> Address change <input type="checkbox"/> Name change <input type="checkbox"/> Initial return <input type="checkbox"/> Terminated <input type="checkbox"/> Amended return <input type="checkbox"/> Application pending	C Name of organization THE BOSTON JEWISH FILM FESTIVAL, INC. Doing Business As Number and street (or P.O. box if mail is not delivered to street address) Room/suite 1001 WATERTOWN STREET City, town, or post office, state, and ZIP code WEST NEWTON, MA 02465 F Name and address of principal officer: JAYMIE SAKS SAME AS C ABOVE	D Employer identification number 04-3414850 E Telephone number 617-244-9899 G Gross receipts \$ 594,911. H(a) Is this a group return for affiliates? <input type="checkbox"/> Yes <input checked="" type="checkbox"/> No H(b) Are all affiliates included? <input type="checkbox"/> Yes <input type="checkbox"/> No If "No," attach a list. (see instructions) H(c) Group exemption number ▶
I Tax-exempt status: <input checked="" type="checkbox"/> 501(c)(3) <input type="checkbox"/> 501(c) () ◀ (insert no.) <input type="checkbox"/> 4947(a)(1) or <input type="checkbox"/> 527		
J Website: ▶ WWW.BJFF.ORG		
K Form of organization: <input checked="" type="checkbox"/> Corporation <input type="checkbox"/> Trust <input type="checkbox"/> Association <input type="checkbox"/> Other ▶		L Year of formation: 1998 M State of legal domicile: MA

Part I Summary

Activities & Governance	1 Briefly describe the organization's mission or most significant activities: BJFF PRESENTS THE BEST CONTEMPORARY FILMS FROM AROUND THE WORLD ON JEWISH THEMES AT ITS 2 Check this box <input type="checkbox"/> if the organization discontinued its operations or disposed of more than 25% of its net assets. 3 Number of voting members of the governing body (Part VI, line 1a) 3 24 4 Number of independent voting members of the governing body (Part VI, line 1b) 4 24 5 Total number of individuals employed in calendar year 2012 (Part V, line 2a) 5 3 6 Total number of volunteers (estimate if necessary) 6 70 7a Total unrelated business revenue from Part VIII, column (C), line 12 7a 0. b Net unrelated business taxable income from Form 990-T, line 34 7b 0.															
Revenue	8 Contributions and grants (Part VIII, line 1h) 403,254. 9 Program service revenue (Part VIII, line 2g) 107,798. 10 Investment income (Part VIII, column (A), lines 3, 4, and 7d) -2,507. 11 Other revenue (Part VIII, column (A), lines 5, 6d, 8c, 9c, 10c, and 11e) 31,197. 12 Total revenue - add lines 8 through 11 (must equal Part VIII, column (A), line 12) 539,742.	<table border="1" style="width:100%; border-collapse: collapse;"> <thead> <tr> <th>Prior Year</th> <th>Current Year</th> </tr> </thead> <tbody> <tr> <td>403,254.</td> <td>418,915.</td> </tr> <tr> <td>107,798.</td> <td>104,140.</td> </tr> <tr> <td>-2,507.</td> <td>33.</td> </tr> <tr> <td>31,197.</td> <td>11,373.</td> </tr> <tr> <td>539,742.</td> <td>534,461.</td> </tr> </tbody> </table>	Prior Year	Current Year	403,254.	418,915.	107,798.	104,140.	-2,507.	33.	31,197.	11,373.	539,742.	534,461.		
Prior Year	Current Year															
403,254.	418,915.															
107,798.	104,140.															
-2,507.	33.															
31,197.	11,373.															
539,742.	534,461.															
Expenses	13 Grants and similar amounts paid (Part IX, column (A), lines 1-3) 0. 14 Benefits paid to or for members (Part IX, column (A), line 4) 0. 15 Salaries, other compensation, employee benefits (Part IX, column (A), lines 5-10) 209,774. 16a Professional fundraising fees (Part IX, column (A), line 11e) 0. b Total fundraising expenses (Part IX, column (D), line 25) ▶ 42,003. 17 Other expenses (Part IX, column (A), lines 11a-11d, 11f-24e) 269,776. 18 Total expenses. Add lines 13-17 (must equal Part IX, column (A), line 25) 479,550. 19 Revenue less expenses. Subtract line 18 from line 12 60,192.	<table border="1" style="width:100%; border-collapse: collapse;"> <tbody> <tr> <td>0.</td> <td>0.</td> </tr> <tr> <td>0.</td> <td>0.</td> </tr> <tr> <td>209,774.</td> <td>197,442.</td> </tr> <tr> <td>0.</td> <td>0.</td> </tr> <tr> <td>269,776.</td> <td>347,428.</td> </tr> <tr> <td>479,550.</td> <td>544,870.</td> </tr> <tr> <td>60,192.</td> <td>-10,409.</td> </tr> </tbody> </table>	0.	0.	0.	0.	209,774.	197,442.	0.	0.	269,776.	347,428.	479,550.	544,870.	60,192.	-10,409.
0.	0.															
0.	0.															
209,774.	197,442.															
0.	0.															
269,776.	347,428.															
479,550.	544,870.															
60,192.	-10,409.															
Net Assets or Fund Balances	20 Total assets (Part X, line 16) 417,820. 21 Total liabilities (Part X, line 26) 21,339. 22 Net assets or fund balances. Subtract line 21 from line 20 396,481.	<table border="1" style="width:100%; border-collapse: collapse;"> <thead> <tr> <th>Beginning of Current Year</th> <th>End of Year</th> </tr> </thead> <tbody> <tr> <td>417,820.</td> <td>412,539.</td> </tr> <tr> <td>21,339.</td> <td>26,467.</td> </tr> <tr> <td>396,481.</td> <td>386,072.</td> </tr> </tbody> </table>	Beginning of Current Year	End of Year	417,820.	412,539.	21,339.	26,467.	396,481.	386,072.						
Beginning of Current Year	End of Year															
417,820.	412,539.															
21,339.	26,467.															
396,481.	386,072.															

Part II Signature Block

Under penalties of perjury, I declare that I have examined this return, including accompanying schedules and statements, and to the best of my knowledge and belief, it is true, correct, and complete. Declaration of preparer (other than officer) is based on all information of which preparer has any knowledge.

Sign Here	Signature of officer JAYMIE SAKS, EXECUTIVE DIRECTOR Type or print name and title	Date
Paid Preparer Use Only	Print/Type preparer's name DANA J. MARKS, CPA Preparer's signature DANA J. MARKS, CPA Date 07/23/13 Check <input type="checkbox"/> if self-employed PTIN P01444519 Firm's name ▶ ALEXANDER, ARONSON, FINNING & CO., P.C. Firm's EIN ▶ 04-2571780 Firm's address ▶ 21 EAST MAIN STREET WESTBORO, MA 01581 Phone no. 508-366-9100	

May the IRS discuss this return with the preparer shown above? (see instructions) Yes No

Part III Statement of Program Service Accomplishments

Check if Schedule O contains a response to any question in this Part III

1 Briefly describe the organization's mission: SEE PART I, LINE 1

2 Did the organization undertake any significant program services during the year which were not listed on the prior Form 990 or 990-EZ? Yes No

3 Did the organization cease conducting, or make significant changes in how it conducts, any program services? Yes No

4 Describe the organization's program service accomplishments for each of its three largest program services, as measured by expenses.

4a (Code:) (Expenses \$ 57,365. including grants of \$) (Revenue \$ 4,200.) HOSTED REELABILITIES FILM FESTIVAL IN GREATER BOSTON, PROMOTING AWARENESS AND APPRECIATION OF THE LIVES, STORIES AND ARTISTIC EXPRESSIONS OF PEOPLE WITH DIFFERENT DISABILITIES FROM A VARIETY OF COMMUNITIES.

4b (Code:) (Expenses \$ 381,023. including grants of \$) (Revenue \$ 100,090.) SPONSORED CONTEMPORARY FILMS FROM AROUND THE WORLD ON JEWISH THEMES TO AN AUDIENCE OF MORE THAN 10,000. FORUMS AND PANEL DISCUSSIONS BASED ON THESE FILMS FOSTERED EDUCATION OF JUDAISM AND ISSUES OF JEWISH IDENTITY.

4c (Code:) (Expenses \$ including grants of \$) (Revenue \$)

4d Other program services (Describe in Schedule O.) (Expenses \$ including grants of \$) (Revenue \$)

4e Total program service expenses 438,388.

Part IV Checklist of Required Schedules

		Yes	No
1	Is the organization described in section 501(c)(3) or 4947(a)(1) (other than a private foundation)? <i>If "Yes," complete Schedule A</i>	X	
2	Is the organization required to complete <i>Schedule B, Schedule of Contributors</i> ?	X	
3	Did the organization engage in direct or indirect political campaign activities on behalf of or in opposition to candidates for public office? <i>If "Yes," complete Schedule C, Part I</i>		X
4	Section 501(c)(3) organizations. Did the organization engage in lobbying activities, or have a section 501(h) election in effect during the tax year? <i>If "Yes," complete Schedule C, Part II</i>		X
5	Is the organization a section 501(c)(4), 501(c)(5), or 501(c)(6) organization that receives membership dues, assessments, or similar amounts as defined in Revenue Procedure 98-19? <i>If "Yes," complete Schedule C, Part III</i>		X
6	Did the organization maintain any donor advised funds or any similar funds or accounts for which donors have the right to provide advice on the distribution or investment of amounts in such funds or accounts? <i>If "Yes," complete Schedule D, Part I</i>		X
7	Did the organization receive or hold a conservation easement, including easements to preserve open space, the environment, historic land areas, or historic structures? <i>If "Yes," complete Schedule D, Part II</i>		X
8	Did the organization maintain collections of works of art, historical treasures, or other similar assets? <i>If "Yes," complete Schedule D, Part III</i>		X
9	Did the organization report an amount in Part X, line 21, for escrow or custodial account liability; serve as a custodian for amounts not listed in Part X; or provide credit counseling, debt management, credit repair, or debt negotiation services? <i>If "Yes," complete Schedule D, Part IV</i>		X
10	Did the organization, directly or through a related organization, hold assets in temporarily restricted endowments, permanent endowments, or quasi-endowments? <i>If "Yes," complete Schedule D, Part V</i>		X
11	If the organization's answer to any of the following questions is "Yes," then complete Schedule D, Parts VI, VII, VIII, IX, or X as applicable.		
a	Did the organization report an amount for land, buildings, and equipment in Part X, line 10? <i>If "Yes," complete Schedule D, Part VI</i>	X	
b	Did the organization report an amount for investments - other securities in Part X, line 12 that is 5% or more of its total assets reported in Part X, line 16? <i>If "Yes," complete Schedule D, Part VII</i>		X
c	Did the organization report an amount for investments - program related in Part X, line 13 that is 5% or more of its total assets reported in Part X, line 16? <i>If "Yes," complete Schedule D, Part VIII</i>		X
d	Did the organization report an amount for other assets in Part X, line 15 that is 5% or more of its total assets reported in Part X, line 16? <i>If "Yes," complete Schedule D, Part IX</i>		X
e	Did the organization report an amount for other liabilities in Part X, line 25? <i>If "Yes," complete Schedule D, Part X</i>		X
f	Did the organization's separate or consolidated financial statements for the tax year include a footnote that addresses the organization's liability for uncertain tax positions under FIN 48 (ASC 740)? <i>If "Yes," complete Schedule D, Part X</i>	X	
12a	Did the organization obtain separate, independent audited financial statements for the tax year? <i>If "Yes," complete Schedule D, Parts XI and XII</i>	X	
b	Was the organization included in consolidated, independent audited financial statements for the tax year? <i>If "Yes," and if the organization answered "No" to line 12a, then completing Schedule D, Parts XI and XII is optional</i>		X
13	Is the organization a school described in section 170(b)(1)(A)(ii)? <i>If "Yes," complete Schedule E</i>		X
14a	Did the organization maintain an office, employees, or agents outside of the United States?		X
b	Did the organization have aggregate revenues or expenses of more than \$10,000 from grantmaking, fundraising, business, investment, and program service activities outside the United States, or aggregate foreign investments valued at \$100,000 or more? <i>If "Yes," complete Schedule F, Parts I and IV</i>		X
15	Did the organization report on Part IX, column (A), line 3, more than \$5,000 of grants or assistance to any organization or entity located outside the United States? <i>If "Yes," complete Schedule F, Parts II and IV</i>		X
16	Did the organization report on Part IX, column (A), line 3, more than \$5,000 of aggregate grants or assistance to individuals located outside the United States? <i>If "Yes," complete Schedule F, Parts III and IV</i>		X
17	Did the organization report a total of more than \$15,000 of expenses for professional fundraising services on Part IX, column (A), lines 6 and 11e? <i>If "Yes," complete Schedule G, Part I</i>		X
18	Did the organization report more than \$15,000 total of fundraising event gross income and contributions on Part VIII, lines 1c and 8a? <i>If "Yes," complete Schedule G, Part II</i>	X	
19	Did the organization report more than \$15,000 of gross income from gaming activities on Part VIII, line 9a? <i>If "Yes," complete Schedule G, Part III</i>		X
20a	Did the organization operate one or more hospital facilities? <i>If "Yes," complete Schedule H</i>		X
b	If "Yes" to line 20a, did the organization attach a copy of its audited financial statements to this return?		

Part IV Checklist of Required Schedules (continued)

	Yes	No
21 Did the organization report more than \$5,000 of grants and other assistance to any government or organization in the United States on Part IX, column (A), line 1? <i>If "Yes," complete Schedule I, Parts I and II</i>		X
22 Did the organization report more than \$5,000 of grants and other assistance to individuals in the United States on Part IX, column (A), line 2? <i>If "Yes," complete Schedule I, Parts I and III</i>		X
23 Did the organization answer "Yes" to Part VII, Section A, line 3, 4, or 5 about compensation of the organization's current and former officers, directors, trustees, key employees, and highest compensated employees? <i>If "Yes," complete Schedule J</i>		X
24a Did the organization have a tax-exempt bond issue with an outstanding principal amount of more than \$100,000 as of the last day of the year, that was issued after December 31, 2002? <i>If "Yes," answer lines 24b through 24d and complete Schedule K. If "No," go to line 25</i>		X
b Did the organization invest any proceeds of tax-exempt bonds beyond a temporary period exception?		
c Did the organization maintain an escrow account other than a refunding escrow at any time during the year to defease any tax-exempt bonds?		
d Did the organization act as an "on behalf of" issuer for bonds outstanding at any time during the year?		
25a Section 501(c)(3) and 501(c)(4) organizations. Did the organization engage in an excess benefit transaction with a disqualified person during the year? <i>If "Yes," complete Schedule L, Part I</i>		X
b Is the organization aware that it engaged in an excess benefit transaction with a disqualified person in a prior year, and that the transaction has not been reported on any of the organization's prior Forms 990 or 990-EZ? <i>If "Yes," complete Schedule L, Part I</i>		X
26 Was a loan to or by a current or former officer, director, trustee, key employee, highest compensated employee, or disqualified person outstanding as of the end of the organization's tax year? <i>If "Yes," complete Schedule L, Part II</i>		X
27 Did the organization provide a grant or other assistance to an officer, director, trustee, key employee, substantial contributor or employee thereof, a grant selection committee member, or to a 35% controlled entity or family member of any of these persons? <i>If "Yes," complete Schedule L, Part III</i>		X
28 Was the organization a party to a business transaction with one of the following parties (see Schedule L, Part IV instructions for applicable filing thresholds, conditions, and exceptions):		
a A current or former officer, director, trustee, or key employee? <i>If "Yes," complete Schedule L, Part IV</i>		X
b A family member of a current or former officer, director, trustee, or key employee? <i>If "Yes," complete Schedule L, Part IV</i>		X
c An entity of which a current or former officer, director, trustee, or key employee (or a family member thereof) was an officer, director, trustee, or direct or indirect owner? <i>If "Yes," complete Schedule L, Part IV</i>		X
29 Did the organization receive more than \$25,000 in non-cash contributions? <i>If "Yes," complete Schedule M</i>		X
30 Did the organization receive contributions of art, historical treasures, or other similar assets, or qualified conservation contributions? <i>If "Yes," complete Schedule M</i>		X
31 Did the organization liquidate, terminate, or dissolve and cease operations? <i>If "Yes," complete Schedule N, Part I</i>		X
32 Did the organization sell, exchange, dispose of, or transfer more than 25% of its net assets? <i>If "Yes," complete Schedule N, Part II</i>		X
33 Did the organization own 100% of an entity disregarded as separate from the organization under Regulations sections 301.7701-2 and 301.7701-3? <i>If "Yes," complete Schedule R, Part I</i>		X
34 Was the organization related to any tax-exempt or taxable entity? <i>If "Yes," complete Schedule R, Part II, III, or IV, and Part V, line 1</i>		X
35a Did the organization have a controlled entity within the meaning of section 512(b)(13)?		X
b If "Yes" to line 35a, did the organization receive any payment from or engage in any transaction with a controlled entity within the meaning of section 512(b)(13)? <i>If "Yes," complete Schedule R, Part V, line 2</i>		
36 Section 501(c)(3) organizations. Did the organization make any transfers to an exempt non-charitable related organization? <i>If "Yes," complete Schedule R, Part V, line 2</i>		X
37 Did the organization conduct more than 5% of its activities through an entity that is not a related organization and that is treated as a partnership for federal income tax purposes? <i>If "Yes," complete Schedule R, Part VI</i>		X
38 Did the organization complete Schedule O and provide explanations in Schedule O for Part VI, lines 11b and 19?	X	

Note. All Form 990 filers are required to complete Schedule O

Part V Statements Regarding Other IRS Filings and Tax Compliance

Check if Schedule O contains a response to any question in this Part V

Input box for Schedule O response

Main table with columns for question number, description, sub-questions (1a-14b), Yes, and No. Includes questions about Form 1096, Form W-2G, Form W-3, foreign accounts, and charitable contributions.

Part VI Governance, Management, and Disclosure For each "Yes" response to lines 2 through 7b below, and for a "No" response to line 8a, 8b, or 10b below, describe the circumstances, processes, or changes in Schedule O. See instructions.

Check if Schedule O contains a response to any question in this Part VI

Section A. Governing Body and Management

		Yes	No
1a	Enter the number of voting members of the governing body at the end of the tax year If there are material differences in voting rights among members of the governing body, or if the governing body delegated broad authority to an executive committee or similar committee, explain in Schedule O.		
	24		
1b	Enter the number of voting members included in line 1a, above, who are independent		
	24		
2	Did any officer, director, trustee, or key employee have a family relationship or a business relationship with any other officer, director, trustee, or key employee?		X
3	Did the organization delegate control over management duties customarily performed by or under the direct supervision of officers, directors, or trustees, or key employees to a management company or other person?		X
4	Did the organization make any significant changes to its governing documents since the prior Form 990 was filed?		X
5	Did the organization become aware during the year of a significant diversion of the organization's assets?		X
6	Did the organization have members or stockholders?		X
7a	Did the organization have members, stockholders, or other persons who had the power to elect or appoint one or more members of the governing body?		X
7b	Are any governance decisions of the organization reserved to (or subject to approval by) members, stockholders, or persons other than the governing body?		X
8	Did the organization contemporaneously document the meetings held or written actions undertaken during the year by the following:		
8a	The governing body?	X	
8b	Each committee with authority to act on behalf of the governing body?	X	
9	Is there any officer, director, trustee, or key employee listed in Part VII, Section A, who cannot be reached at the organization's mailing address? If "Yes," provide the names and addresses in Schedule O		X

Section B. Policies (This Section B requests information about policies not required by the Internal Revenue Code.)

		Yes	No
10a	Did the organization have local chapters, branches, or affiliates?		X
10b	If "Yes," did the organization have written policies and procedures governing the activities of such chapters, affiliates, and branches to ensure their operations are consistent with the organization's exempt purposes?		
11a	Has the organization provided a complete copy of this Form 990 to all members of its governing body before filing the form?	X	
11b	Describe in Schedule O the process, if any, used by the organization to review this Form 990.		
12a	Did the organization have a written conflict of interest policy? If "No," go to line 13	X	
12b	Were officers, directors, or trustees, and key employees required to disclose annually interests that could give rise to conflicts?	X	
12c	Did the organization regularly and consistently monitor and enforce compliance with the policy? If "Yes," describe in Schedule O how this was done	X	
13	Did the organization have a written whistleblower policy?	X	
14	Did the organization have a written document retention and destruction policy?	X	
15	Did the process for determining compensation of the following persons include a review and approval by independent persons, comparability data, and contemporaneous substantiation of the deliberation and decision?		
15a	The organization's CEO, Executive Director, or top management official	X	
15b	Other officers or key employees of the organization	X	
	If "Yes" to line 15a or 15b, describe the process in Schedule O (see instructions).		
16a	Did the organization invest in, contribute assets to, or participate in a joint venture or similar arrangement with a taxable entity during the year?		X
16b	If "Yes," did the organization follow a written policy or procedure requiring the organization to evaluate its participation in joint venture arrangements under applicable federal tax law, and take steps to safeguard the organization's exempt status with respect to such arrangements?		

Section C. Disclosure

- 17** List the states with which a copy of this Form 990 is required to be filed **MA**
- 18** Section 6104 requires an organization to make its Forms 1023 (or 1024 if applicable), 990, and 990-T (Section 501(c)(3)s only) available for public inspection. Indicate how you made these available. Check all that apply.
 Own website Another's website Upon request Other (explain in Schedule O)
- 19** Describe in Schedule O whether (and if so, how), the organization made its governing documents, conflict of interest policy, and financial statements available to the public during the tax year.
- 20** State the name, physical address, and telephone number of the person who possesses the books and records of the organization: **JAYMIE SAKS, EXECUTIVE DIRECTOR - 617-244-9899**
1001 WATERTOWN STREET, WEST NEWTON, MA 02465

Part VII Compensation of Officers, Directors, Trustees, Key Employees, Highest Compensated Employees, and Independent Contractors

Check if Schedule O contains a response to any question in this Part VII

Section A. Officers, Directors, Trustees, Key Employees, and Highest Compensated Employees

1a Complete this table for all persons required to be listed. Report compensation for the calendar year ending with or within the organization's tax year.

- List all of the organization's **current** officers, directors, trustees (whether individuals or organizations), regardless of amount of compensation. Enter -0- in columns (D), (E), and (F) if no compensation was paid.
- List all of the organization's **current** key employees, if any. See instructions for definition of "key employee."
- List the organization's five **current** highest compensated employees (other than an officer, director, trustee, or key employee) who received reportable compensation (Box 5 of Form W-2 and/or Box 7 of Form 1099-MISC) of more than \$100,000 from the organization and any related organizations.
- List all of the organization's **former** officers, key employees, and highest compensated employees who received more than \$100,000 of reportable compensation from the organization and any related organizations.
- List all of the organization's **former directors or trustees** that received, in the capacity as a former director or trustee of the organization, more than \$10,000 of reportable compensation from the organization and any related organizations.

List persons in the following order: individual trustees or directors; institutional trustees; officers; key employees; highest compensated employees; and former such persons.

Check this box if neither the organization nor any related organization compensated any current officer, director, or trustee.

(A) Name and Title	(B) Average hours per week (list any hours for related organizations below line)	(C) Position (do not check more than one box, unless person is both an officer and a director/trustee)						(D) Reportable compensation from the organization (W-2/1099-MISC)	(E) Reportable compensation from related organizations (W-2/1099-MISC)	(F) Estimated amount of other compensation from the organization and related organizations
		Individual trustee or director	Institutional trustee	Officer	Key employee	Highest compensated employee	Former			
(1) JUDITH L. GANZ DIRECTOR	1.00	X					0.	0.	0.	
(2) JOYCE FIELD PASTOR PRESIDENT	1.00	X		X			0.	0.	0.	
(3) MARC A. BUSNY TREASURER	1.00	X		X			0.	0.	0.	
(4) DENISE L. WIDMAN VICE PRESIDENT	1.00	X		X			0.	0.	0.	
(5) BARBARA RESNEK CLERK	1.00	X		X			0.	0.	0.	
(6) JEFFREY QUEEN DIRECTOR	1.00	X					0.	0.	0.	
(7) TAREN METSON DIRECTOR	1.00	X					0.	0.	0.	
(8) DEBRA ANKELES DIRECTOR	1.00	X					0.	0.	0.	
(9) MERLE W. TARNOW DIRECTOR	1.00	X					0.	0.	0.	
(10) NORTON SHERMAN DIRECTOR	1.00	X					0.	0.	0.	
(11) JIM GOULD DIRECTOR	1.00	X					0.	0.	0.	
(12) NANCY GOSSELS DIRECTOR	1.00	X					0.	0.	0.	
(13) BEVERLY BAVLY DIRECTOR	1.00	X					0.	0.	0.	
(14) JUDY LAPPIN DIRECTOR	1.00	X					0.	0.	0.	
(15) ADAM RIEMER DIRECTOR	1.00	X					0.	0.	0.	
(16) JOANNA ROTHMAN DIRECTOR	1.00	X					0.	0.	0.	
(17) LAWRENCE S. FEINBERG DIRECTOR	1.00	X					0.	0.	0.	

Part VII Section A. Officers, Directors, Trustees, Key Employees, and Highest Compensated Employees (continued)

(A) Name and title	(B) Average hours per week (list any hours for related organizations below line)	(C) Position (do not check more than one box, unless person is both an officer and a director/trustee)						(D) Reportable compensation from the organization (W-2/1099-MISC)	(E) Reportable compensation from related organizations (W-2/1099-MISC)	(F) Estimated amount of other compensation from the organization and related organizations
		Individual trustee or director	Institutional trustee	Officer	Key employee	Highest compensated employee	Former			
(18) MAYA S. KATZ DIRECTOR	1.00	X						0.	0.	0.
(19) BETTE ANN LIBBY DIRECTOR	1.00	X						0.	0.	0.
(20) MARK LOWENSTEIN DIRECTOR	1.00	X						0.	0.	0.
(21) EVELYN NEUMEYER DIRECTOR	1.00	X						0.	0.	0.
(22) PAUL G. ROBERTS DIRECTOR	1.00	X						0.	0.	0.
(23) DEANNA S. WOLK DIRECTOR	1.00	X						0.	0.	0.
(24) KAJ WILSON DIRECTOR	1.00	X						0.	0.	0.
(25) JAYMIE E. SAKS EXECUTIVE DIRECTOR	40.00			X				75,704.	0.	1,440.
1b Sub-total								75,704.	0.	1,440.
c Total from continuation sheets to Part VII, Section A								0.	0.	0.
d Total (add lines 1b and 1c)								75,704.	0.	1,440.

2 Total number of individuals (including but not limited to those listed above) who received more than \$100,000 of reportable compensation from the organization **0**

	Yes	No
3 Did the organization list any former officer, director, or trustee, key employee, or highest compensated employee on line 1a? <i>If "Yes," complete Schedule J for such individual</i>		X
4 For any individual listed on line 1a, is the sum of reportable compensation and other compensation from the organization and related organizations greater than \$150,000? <i>If "Yes," complete Schedule J for such individual</i>		X
5 Did any person listed on line 1a receive or accrue compensation from any unrelated organization or individual for services rendered to the organization? <i>If "Yes," complete Schedule J for such person</i>		X

Section B. Independent Contractors

1 Complete this table for your five highest compensated independent contractors that received more than \$100,000 of compensation from the organization. Report compensation for the calendar year ending with or within the organization's tax year.

(A) Name and business address	(B) Description of services	(C) Compensation
NONE		

2 Total number of independent contractors (including but not limited to those listed above) who received more than \$100,000 of compensation from the organization **0**

Part VIII Statement of Revenue

Check if Schedule O contains a response to any question in this Part VIII

		(A)	(B)	(C)	(D)	
		Total revenue	Related or exempt function revenue	Unrelated business revenue	Revenue excluded from tax under sections 512, 513, or 514	
Contributions, Gifts, Grants and Other Similar Amounts	1 a Federated campaigns	1a				
	b Membership dues	1b				
	c Fundraising events	1c	22,506.			
	d Related organizations	1d				
	e Government grants (contributions)	1e				
	f All other contributions, gifts, grants, and similar amounts not included above	1f	396,409.			
	g Noncash contributions included in lines 1a-1f: \$					
	h Total. Add lines 1a-1f		418,915.			
	Program Service Revenue	2 a TICKET REVENUE	Business Code 711300	104,140.	104,140.	
b						
c						
d						
e						
f All other program service revenue						
g Total. Add lines 2a-2f			104,140.			
Other Revenue	3 Investment income (including dividends, interest, and other similar amounts)		33.		33.	
	4 Income from investment of tax-exempt bond proceeds					
	5 Royalties					
	6 a Gross rents	(i) Real				
		(ii) Personal				
		b Less: rental expenses				
		c Rental income or (loss)				
	d Net rental income or (loss)					
	7 a Gross amount from sales of assets other than inventory	(i) Securities				
		(ii) Other				
		b Less: cost or other basis and sales expenses				
		c Gain or (loss)				
	d Net gain or (loss)					
	8 a Gross income from fundraising events (not including \$ 22,506. of contributions reported on line 1c). See Part IV, line 18	a	71,673.			
		b Less: direct expenses	b	60,450.		
c Net income or (loss) from fundraising events			11,223.		11,223.	
9 a Gross income from gaming activities. See Part IV, line 19	a					
	b Less: direct expenses	b				
	c Net income or (loss) from gaming activities					
10 a Gross sales of inventory, less returns and allowances	a					
	b Less: cost of goods sold	b				
	c Net income or (loss) from sales of inventory					
Miscellaneous Revenue		Business Code				
11 a OTHER REVENUE	711300	150.	150.			
b						
c						
d All other revenue						
e Total. Add lines 11a-11d		150.				
12 Total revenue. See instructions.		534,461.	104,290.	0.	11,256.	

Part IX Statement of Functional Expenses

Section 501(c)(3) and 501(c)(4) organizations must complete all columns. All other organizations must complete column (A).

Check if Schedule O contains a response to any question in this Part IX

X

Do not include amounts reported on lines 6b, 7b, 8b, 9b, and 10b of Part VIII.	(A) Total expenses	(B) Program service expenses	(C) Management and general expenses	(D) Fundraising expenses
1 Grants and other assistance to governments and organizations in the United States. See Part IV, line 21				
2 Grants and other assistance to individuals in the United States. See Part IV, line 22				
3 Grants and other assistance to governments, organizations, and individuals outside the United States. See Part IV, lines 15 and 16				
4 Benefits paid to or for members				
5 Compensation of current officers, directors, trustees, and key employees	79,997.	48,574.	7,856.	23,567.
6 Compensation not included above, to disqualified persons (as defined under section 4958(f)(1)) and persons described in section 4958(c)(3)(B)				
7 Other salaries and wages	95,262.	95,262.		
8 Pension plan accruals and contributions (include section 401(k) and 403(b) employer contributions)				
9 Other employee benefits	8,160.	8,160.		
10 Payroll taxes	14,023.	11,488.	634.	1,901.
11 Fees for services (non-employees):				
a Management				
b Legal				
c Accounting	12,500.		12,500.	
d Lobbying				
e Professional fundraising services. See Part IV, line 17				
f Investment management fees				
g Other. (If line 11g amount exceeds 10% of line 25, column (A) amount, list line 11g expenses on Sch O.)	24,438.		24,438.	
12 Advertising and promotion				
13 Office expenses	5,282.	4,327.	239.	716.
14 Information technology				
15 Royalties				
16 Occupancy	22,626.	18,536.	1,022.	3,068.
17 Travel	8,899.	7,290.	402.	1,207.
18 Payments of travel or entertainment expenses for any federal, state, or local public officials				
19 Conferences, conventions, and meetings				
20 Interest				
21 Payments to affiliates				
22 Depreciation, depletion, and amortization	6,048.	4,956.	272.	820.
23 Insurance	3,699.	3,030.	167.	502.
24 Other expenses. Itemize expenses not covered above. (List miscellaneous expenses in line 24e. If line 24e amount exceeds 10% of line 25, column (A) amount, list line 24e expenses on Schedule O.)				
a CONTRACTED SERVICES	78,955.	63,178.	15,777.	
b PRINTING AND PUBLICATIO	32,972.	32,972.		
c OTHER PROGRAM EVENTS	29,298.	29,298.		
d FILM RENTALS	26,263.	26,263.		
e All other expenses SEE SCH O	96,448.	85,054.	1,172.	10,222.
25 Total functional expenses. Add lines 1 through 24e	544,870.	438,388.	64,479.	42,003.
26 Joint costs. Complete this line only if the organization reported in column (B) joint costs from a combined educational campaign and fundraising solicitation.				

Check here if following SOP 98-2 (ASC 958-720)

Part X Balance Sheet

Check if Schedule O contains a response to any question in this Part X

		(A) Beginning of year		(B) End of year	
Assets	1 Cash - non-interest-bearing	125,729.	1	145,938.	
	2 Savings and temporary cash investments	198,396.	2	198,429.	
	3 Pledges and grants receivable, net	40,000.	3	32,500.	
	4 Accounts receivable, net	30,396.	4	19,327.	
	5 Loans and other receivables from current and former officers, directors, trustees, key employees, and highest compensated employees. Complete Part II of Schedule L		5		
	6 Loans and other receivables from other disqualified persons (as defined under section 4958(f)(1)), persons described in section 4958(c)(3)(B), and contributing employers and sponsoring organizations of section 501(c)(9) voluntary employees' beneficiary organizations (see instr). Complete Part II of Sch L		6		
	7 Notes and loans receivable, net		7		
	8 Inventories for sale or use		8		
	9 Prepaid expenses and deferred charges	7,185.	9	3,198.	
	10a Land, buildings, and equipment: cost or other basis. Complete Part VI of Schedule D	10a 75,266.			
	b Less: accumulated depreciation	10b 63,269.	14,964.	10c 11,997.	
	11 Investments - publicly traded securities		11		
	12 Investments - other securities. See Part IV, line 11		12		
	13 Investments - program-related. See Part IV, line 11		13		
	14 Intangible assets		14		
	15 Other assets. See Part IV, line 11	1,150.	15	1,150.	
16 Total assets. Add lines 1 through 15 (must equal line 34)	417,820.	16	412,539.		
Liabilities	17 Accounts payable and accrued expenses	21,339.	17	26,467.	
	18 Grants payable		18		
	19 Deferred revenue		19		
	20 Tax-exempt bond liabilities		20		
	21 Escrow or custodial account liability. Complete Part IV of Schedule D		21		
	22 Loans and other payables to current and former officers, directors, trustees, key employees, highest compensated employees, and disqualified persons. Complete Part II of Schedule L		22		
	23 Secured mortgages and notes payable to unrelated third parties		23		
	24 Unsecured notes and loans payable to unrelated third parties		24		
	25 Other liabilities (including federal income tax, payables to related third parties, and other liabilities not included on lines 17-24). Complete Part X of Schedule D		25		
	26 Total liabilities. Add lines 17 through 25	21,339.	26	26,467.	
Net Assets or Fund Balances	Organizations that follow SFAS 117 (ASC 958), check here <input checked="" type="checkbox"/> and complete lines 27 through 29, and lines 33 and 34.				
	27 Unrestricted net assets	357,981.	27	353,372.	
	28 Temporarily restricted net assets	38,500.	28	32,700.	
	29 Permanently restricted net assets		29		
	Organizations that do not follow SFAS 117 (ASC 958), check here <input type="checkbox"/> and complete lines 30 through 34.				
	30 Capital stock or trust principal, or current funds		30		
	31 Paid-in or capital surplus, or land, building, or equipment fund		31		
	32 Retained earnings, endowment, accumulated income, or other funds		32		
33 Total net assets or fund balances	396,481.	33	386,072.		
34 Total liabilities and net assets/fund balances	417,820.	34	412,539.		

Part XI Reconciliation of Net Assets

Check if Schedule O contains a response to any question in this Part XI

1	Total revenue (must equal Part VIII, column (A), line 12)	1	534,461.
2	Total expenses (must equal Part IX, column (A), line 25)	2	544,870.
3	Revenue less expenses. Subtract line 2 from line 1	3	-10,409.
4	Net assets or fund balances at beginning of year (must equal Part X, line 33, column (A))	4	396,481.
5	Net unrealized gains (losses) on investments	5	
6	Donated services and use of facilities	6	
7	Investment expenses	7	
8	Prior period adjustments	8	
9	Other changes in net assets or fund balances (explain in Schedule O)	9	0.
10	Net assets or fund balances at end of year. Combine lines 3 through 9 (must equal Part X, line 33, column (B))	10	386,072.

Part XII Financial Statements and Reporting

Check if Schedule O contains a response to any question in this Part XII

		Yes	No
1	Accounting method used to prepare the Form 990: <input type="checkbox"/> Cash <input checked="" type="checkbox"/> Accrual <input type="checkbox"/> Other _____ If the organization changed its method of accounting from a prior year or checked "Other," explain in Schedule O.		
2a	Were the organization's financial statements compiled or reviewed by an independent accountant? If "Yes," check a box below to indicate whether the financial statements for the year were compiled or reviewed on a separate basis, consolidated basis, or both: <input type="checkbox"/> Separate basis <input type="checkbox"/> Consolidated basis <input type="checkbox"/> Both consolidated and separate basis		X
2b	Were the organization's financial statements audited by an independent accountant? If "Yes," check a box below to indicate whether the financial statements for the year were audited on a separate basis, consolidated basis, or both: <input checked="" type="checkbox"/> Separate basis <input type="checkbox"/> Consolidated basis <input type="checkbox"/> Both consolidated and separate basis	X	
2c	If "Yes" to line 2a or 2b, does the organization have a committee that assumes responsibility for oversight of the audit, review, or compilation of its financial statements and selection of an independent accountant? If the organization changed either its oversight process or selection process during the tax year, explain in Schedule O.	X	
3a	As a result of a federal award, was the organization required to undergo an audit or audits as set forth in the Single Audit Act and OMB Circular A-133?		X
3b	If "Yes," did the organization undergo the required audit or audits? If the organization did not undergo the required audit or audits, explain why in Schedule O and describe any steps taken to undergo such audits		

Part II Support Schedule for Organizations Described in Sections 170(b)(1)(A)(iv) and 170(b)(1)(A)(vi)

(Complete only if you checked the box on line 5, 7, or 8 of Part I or if the organization failed to qualify under Part III. If the organization fails to qualify under the tests listed below, please complete Part III.)

Section A. Public Support

Calendar year (or fiscal year beginning in) ▶	(a) 2008	(b) 2009	(c) 2010	(d) 2011	(e) 2012	(f) Total
1 Gifts, grants, contributions, and membership fees received. (Do not include any "unusual grants.")						
2 Tax revenues levied for the organization's benefit and either paid to or expended on its behalf						
3 The value of services or facilities furnished by a governmental unit to the organization without charge						
4 Total. Add lines 1 through 3						
5 The portion of total contributions by each person (other than a governmental unit or publicly supported organization) included on line 1 that exceeds 2% of the amount shown on line 11, column (f)						
6 Public support. Subtract line 5 from line 4.						

Section B. Total Support

Calendar year (or fiscal year beginning in) ▶	(a) 2008	(b) 2009	(c) 2010	(d) 2011	(e) 2012	(f) Total
7 Amounts from line 4						
8 Gross income from interest, dividends, payments received on securities loans, rents, royalties and income from similar sources						
9 Net income from unrelated business activities, whether or not the business is regularly carried on						
10 Other income. Do not include gain or loss from the sale of capital assets (Explain in Part IV.)						
11 Total support. Add lines 7 through 10						
12 Gross receipts from related activities, etc. (see instructions)					12	
13 First five years. If the Form 990 is for the organization's first, second, third, fourth, or fifth tax year as a section 501(c)(3) organization, check this box and stop here						<input type="checkbox"/>

Section C. Computation of Public Support Percentage

14 Public support percentage for 2012 (line 6, column (f) divided by line 11, column (f))	14	%
15 Public support percentage from 2011 Schedule A, Part II, line 14	15	%
16a 33 1/3% support test - 2012. If the organization did not check the box on line 13, and line 14 is 33 1/3% or more, check this box and stop here. The organization qualifies as a publicly supported organization		<input type="checkbox"/>
b 33 1/3% support test - 2011. If the organization did not check a box on line 13 or 16a, and line 15 is 33 1/3% or more, check this box and stop here. The organization qualifies as a publicly supported organization		<input type="checkbox"/>
17a 10% -facts-and-circumstances test - 2012. If the organization did not check a box on line 13, 16a, or 16b, and line 14 is 10% or more, and if the organization meets the "facts-and-circumstances" test, check this box and stop here. Explain in Part IV how the organization meets the "facts-and-circumstances" test. The organization qualifies as a publicly supported organization		<input type="checkbox"/>
b 10% -facts-and-circumstances test - 2011. If the organization did not check a box on line 13, 16a, 16b, or 17a, and line 15 is 10% or more, and if the organization meets the "facts-and-circumstances" test, check this box and stop here. Explain in Part IV how the organization meets the "facts-and-circumstances" test. The organization qualifies as a publicly supported organization		<input type="checkbox"/>
18 Private foundation. If the organization did not check a box on line 13, 16a, 16b, 17a, or 17b, check this box and see instructions		<input type="checkbox"/>

Part III Support Schedule for Organizations Described in Section 509(a)(2)

(Complete only if you checked the box on line 9 of Part I or if the organization failed to qualify under Part II. If the organization fails to qualify under the tests listed below, please complete Part II.)

Section A. Public Support

Calendar year (or fiscal year beginning in) ▶	(a) 2008	(b) 2009	(c) 2010	(d) 2011	(e) 2012	(f) Total
1 Gifts, grants, contributions, and membership fees received. (Do not include any "unusual grants.")	385,778.	312,345.	405,392.	403,254.	418,915.	1,925,684.
2 Gross receipts from admissions, merchandise sold or services performed, or facilities furnished in any activity that is related to the organization's tax-exempt purpose	132,803.	113,484.	121,789.	107,798.	104,140.	580,014.
3 Gross receipts from activities that are not an unrelated trade or business under section 513						
4 Tax revenues levied for the organization's benefit and either paid to or expended on its behalf						
5 The value of services or facilities furnished by a governmental unit to the organization without charge						
6 Total. Add lines 1 through 5	518,581.	425,829.	527,181.	511,052.	523,055.	2,505,698.
7a Amounts included on lines 1, 2, and 3 received from disqualified persons	14,400.	11,860.	5,920.	5,000.	5,000.	42,180.
b Amounts included on lines 2 and 3 received from other than disqualified persons that exceed the greater of \$5,000 or 1% of the amount on line 13 for the year						0.
c Add lines 7a and 7b	14,400.	11,860.	5,920.	5,000.	5,000.	42,180.
8 Public support. (Subtract line 7c from line 6.)						2,463,518.

Section B. Total Support

Calendar year (or fiscal year beginning in) ▶	(a) 2008	(b) 2009	(c) 2010	(d) 2011	(e) 2012	(f) Total
9 Amounts from line 6	518,581.	425,829.	527,181.	511,052.	523,055.	2,505,698.
10a Gross income from interest, dividends, payments received on securities loans, rents, royalties and income from similar sources	2,878.	249.	49.	195.	33.	3,404.
b Unrelated business taxable income (less section 511 taxes) from businesses acquired after June 30, 1975						
c Add lines 10a and 10b	2,878.	249.	49.	195.	33.	3,404.
11 Net income from unrelated business activities not included in line 10b, whether or not the business is regularly carried on						
12 Other income. Do not include gain or loss from the sale of capital assets (Explain in Part IV.)	22,835.	27,518.	250.	95.	150.	50,848.
13 Total support. (Add lines 9, 10c, 11, and 12.)	544,294.	453,596.	527,480.	511,342.	523,238.	2,559,950.

14 First five years. If the Form 990 is for the organization's first, second, third, fourth, or fifth tax year as a section 501(c)(3) organization, check this box and **stop here**

Section C. Computation of Public Support Percentage

15 Public support percentage for 2012 (line 8, column (f) divided by line 13, column (f))	15	96.23 %
16 Public support percentage from 2011 Schedule A, Part III, line 15	16	95.13 %

Section D. Computation of Investment Income Percentage

17 Investment income percentage for 2012 (line 10c, column (f) divided by line 13, column (f))	17	.13 %
18 Investment income percentage from 2011 Schedule A, Part III, line 17	18	.43 %

19a 33 1/3% support tests - 2012. If the organization did not check the box on line 14, and line 15 is more than 33 1/3%, and line 17 is not more than 33 1/3%, check this box and **stop here**. The organization qualifies as a publicly supported organization

b 33 1/3% support tests - 2011. If the organization did not check a box on line 14 or line 19a, and line 16 is more than 33 1/3%, and line 18 is not more than 33 1/3%, check this box and **stop here**. The organization qualifies as a publicly supported organization

20 Private foundation. If the organization did not check a box on line 14, 19a, or 19b, check this box and see instructions

SCHEDULE D
(Form 990)

Department of the Treasury
Internal Revenue Service

Supplemental Financial Statements

▶ **Complete if the organization answered "Yes," to Form 990, Part IV, line 6, 7, 8, 9, 10, 11a, 11b, 11c, 11d, 11e, 11f, 12a, or 12b.**

▶ **Attach to Form 990. ▶ See separate instructions.**

OMB No. 1545-0047

2012

Open to Public Inspection

Name of the organization

THE BOSTON JEWISH FILM FESTIVAL, INC.

Employer identification number

04-3414850

Part I Organizations Maintaining Donor Advised Funds or Other Similar Funds or Accounts. Complete if the organization answered "Yes" to Form 990, Part IV, line 6.

	(a) Donor advised funds	(b) Funds and other accounts
1 Total number at end of year		
2 Aggregate contributions to (during year)		
3 Aggregate grants from (during year)		
4 Aggregate value at end of year		
5 Did the organization inform all donors and donor advisors in writing that the assets held in donor advised funds are the organization's property, subject to the organization's exclusive legal control?		<input type="checkbox"/> Yes <input type="checkbox"/> No
6 Did the organization inform all grantees, donors, and donor advisors in writing that grant funds can be used only for charitable purposes and not for the benefit of the donor or donor advisor, or for any other purpose conferring impermissible private benefit?		<input type="checkbox"/> Yes <input type="checkbox"/> No

Part II Conservation Easements. Complete if the organization answered "Yes" to Form 990, Part IV, line 7.

1 Purpose(s) of conservation easements held by the organization (check all that apply).

Preservation of land for public use (e.g., recreation or education) Preservation of an historically important land area

Protection of natural habitat Preservation of a certified historic structure

Preservation of open space

2 Complete lines 2a through 2d if the organization held a qualified conservation contribution in the form of a conservation easement on the last day of the tax year.

	Held at the End of the Tax Year
a Total number of conservation easements	2a
b Total acreage restricted by conservation easements	2b
c Number of conservation easements on a certified historic structure included in (a)	2c
d Number of conservation easements included in (c) acquired after 8/17/06, and not on a historic structure listed in the National Register	2d

3 Number of conservation easements modified, transferred, released, extinguished, or terminated by the organization during the tax year ▶ _____

4 Number of states where property subject to conservation easement is located ▶ _____

5 Does the organization have a written policy regarding the periodic monitoring, inspection, handling of violations, and enforcement of the conservation easements it holds?

Yes No

6 Staff and volunteer hours devoted to monitoring, inspecting, and enforcing conservation easements during the year ▶ _____

7 Amount of expenses incurred in monitoring, inspecting, and enforcing conservation easements during the year ▶ \$ _____

8 Does each conservation easement reported on line 2(d) above satisfy the requirements of section 170(h)(4)(B)(i) and section 170(h)(4)(B)(ii)?

Yes No

9 In Part XIII, describe how the organization reports conservation easements in its revenue and expense statement, and balance sheet, and include, if applicable, the text of the footnote to the organization's financial statements that describes the organization's accounting for conservation easements.

Part III Organizations Maintaining Collections of Art, Historical Treasures, or Other Similar Assets.

Complete if the organization answered "Yes" to Form 990, Part IV, line 8.

1a If the organization elected, as permitted under SFAS 116 (ASC 958), not to report in its revenue statement and balance sheet works of art, historical treasures, or other similar assets held for public exhibition, education, or research in furtherance of public service, provide, in Part XIII, the text of the footnote to its financial statements that describes these items.

b If the organization elected, as permitted under SFAS 116 (ASC 958), to report in its revenue statement and balance sheet works of art, historical treasures, or other similar assets held for public exhibition, education, or research in furtherance of public service, provide the following amounts relating to these items:

(i) Revenues included in Form 990, Part VIII, line 1

▶ \$ _____

(ii) Assets included in Form 990, Part X

▶ \$ _____

2 If the organization received or held works of art, historical treasures, or other similar assets for financial gain, provide the following amounts required to be reported under SFAS 116 (ASC 958) relating to these items:

a Revenues included in Form 990, Part VIII, line 1

▶ \$ _____

b Assets included in Form 990, Part X

▶ \$ _____

Part III Organizations Maintaining Collections of Art, Historical Treasures, or Other Similar Assets (continued)

- 3 Using the organization's acquisition, accession, and other records, check any of the following that are a significant use of its collection items (check all that apply):
- a Public exhibition
 - b Scholarly research
 - c Preservation for future generations
 - d Loan or exchange programs
 - e Other _____
- 4 Provide a description of the organization's collections and explain how they further the organization's exempt purpose in Part XIII.
- 5 During the year, did the organization solicit or receive donations of art, historical treasures, or other similar assets to be sold to raise funds rather than to be maintained as part of the organization's collection? Yes No

Part IV Escrow and Custodial Arrangements. Complete if the organization answered "Yes" to Form 990, Part IV, line 9, or reported an amount on Form 990, Part X, line 21.

- 1a Is the organization an agent, trustee, custodian or other intermediary for contributions or other assets not included on Form 990, Part X? Yes No
- b If "Yes," explain the arrangement in Part XIII and complete the following table:
- | | Amount |
|---------------------------------|--------|
| c Beginning balance | 1c |
| d Additions during the year | 1d |
| e Distributions during the year | 1e |
| f Ending balance | 1f |
- 2a Did the organization include an amount on Form 990, Part X, line 21? Yes No
- b If "Yes," explain the arrangement in Part XIII. Check here if the explanation has been provided in Part XIII

Part V Endowment Funds. Complete if the organization answered "Yes" to Form 990, Part IV, line 10.

	(a) Current year	(b) Prior year	(c) Two years back	(d) Three years back	(e) Four years back
1a Beginning of year balance					
b Contributions					
c Net investment earnings, gains, and losses					
d Grants or scholarships					
e Other expenditures for facilities and programs					
f Administrative expenses					
g End of year balance					

2 Provide the estimated percentage of the current year end balance (line 1g, column (a)) held as:

- a Board designated or quasi-endowment _____ %
- b Permanent endowment _____ %
- c Temporarily restricted endowment _____ %

The percentages in lines 2a, 2b, and 2c should equal 100%.

3a Are there endowment funds not in the possession of the organization that are held and administered for the organization by:

- (i) unrelated organizations
- (ii) related organizations

	Yes	No
3a(i)		
3a(ii)		
3b		

b If "Yes" to 3a(ii), are the related organizations listed as required on Schedule R?

4 Describe in Part XIII the intended uses of the organization's endowment funds.

Part VI Land, Buildings, and Equipment. See Form 990, Part X, line 10.

Description of property	(a) Cost or other basis (investment)	(b) Cost or other basis (other)	(c) Accumulated depreciation	(d) Book value
1a Land				
b Buildings				
c Leasehold improvements				
d Equipment		75,266.	63,269.	11,997.
e Other				0.
Total. Add lines 1a through 1e. (Column (d) must equal Form 990, Part X, column (B), line 10(c).)				11,997.

Part VII Investments - Other Securities. See Form 990, Part X, line 12.

(a) Description of security or category (including name of security)	(b) Book value	(c) Method of valuation: Cost or end-of-year market value
(1) Financial derivatives		
(2) Closely-held equity interests		
(3) Other		
(A)		
(B)		
(C)		
(D)		
(E)		
(F)		
(G)		
(H)		
(I)		
Total. (Col. (b) must equal Form 990, Part X, col. (B) line 12.)		

Part VIII Investments - Program Related. See Form 990, Part X, line 13.

(a) Description of investment type	(b) Book value	(c) Method of valuation: Cost or end-of-year market value
(1)		
(2)		
(3)		
(4)		
(5)		
(6)		
(7)		
(8)		
(9)		
(10)		
Total. (Col. (b) must equal Form 990, Part X, col. (B) line 13.)		

Part IX Other Assets. See Form 990, Part X, line 15.

(a) Description	(b) Book value
(1)	
(2)	
(3)	
(4)	
(5)	
(6)	
(7)	
(8)	
(9)	
(10)	
Total. (Column (b) must equal Form 990, Part X, col. (B) line 15.)	

Part X Other Liabilities. See Form 990, Part X, line 25.

1. (a) Description of liability	(b) Book value
(1) Federal income taxes	
(2)	
(3)	
(4)	
(5)	
(6)	
(7)	
(8)	
(9)	
(10)	
(11)	
Total. (Column (b) must equal Form 990, Part X, col. (B) line 25.)	

2. FIN 48 (ASC 740) Footnote. In Part XIII, provide the text of the footnote to the organization's financial statements that reports the organization's liability for uncertain tax positions under FIN 48 (ASC 740). Check here if the text of the footnote has been provided in Part XIII

Part XI Reconciliation of Revenue per Audited Financial Statements With Revenue per Return

1	Total revenue, gains, and other support per audited financial statements	1	638,951.
2	Amounts included on line 1 but not on Form 990, Part VIII, line 12:		
a	Net unrealized gains on investments	2a	
b	Donated services and use of facilities	2b	44,040.
c	Recoveries of prior year grants	2c	
d	Other (Describe in Part XIII.)	2d	60,450.
e	Add lines 2a through 2d	2e	104,490.
3	Subtract line 2e from line 1	3	534,461.
4	Amounts included on Form 990, Part VIII, line 12, but not on line 1:		
a	Investment expenses not included on Form 990, Part VIII, line 7b	4a	
b	Other (Describe in Part XIII.)	4b	
c	Add lines 4a and 4b	4c	0.
5	Total revenue. Add lines 3 and 4c . (This must equal Form 990, Part I, line 12.)	5	534,461.

Part XII Reconciliation of Expenses per Audited Financial Statements With Expenses per Return

1	Total expenses and losses per audited financial statements	1	649,360.
2	Amounts included on line 1 but not on Form 990, Part IX, line 25:		
a	Donated services and use of facilities	2a	44,040.
b	Prior year adjustments	2b	
c	Other losses	2c	
d	Other (Describe in Part XIII.)	2d	60,450.
e	Add lines 2a through 2d	2e	104,490.
3	Subtract line 2e from line 1	3	544,870.
4	Amounts included on Form 990, Part IX, line 25, but not on line 1:		
a	Investment expenses not included on Form 990, Part VIII, line 7b	4a	
b	Other (Describe in Part XIII.)	4b	
c	Add lines 4a and 4b	4c	0.
5	Total expenses. Add lines 3 and 4c . (This must equal Form 990, Part I, line 18.)	5	544,870.

Part XIII Supplemental Information

Complete this part to provide the descriptions required for Part II, lines 3, 5, and 9; Part III, lines 1a and 4; Part IV, lines 1b and 2b; Part V, line 4; Part X, line 2; Part XI, lines 2d and 4b; and Part XII, lines 2d and 4b. Also complete this part to provide any additional information.

PART X, LINE 2: THE FESTIVAL FOLLOWS THE ACCOUNTING FOR UNCERTAINTY IN

INCOME TAXES STANDARD WHICH REQUIRES THE FESTIVAL TO REPORT UNCERTAIN TAX

POSITIONS, RELATED INTEREST AND PENALTIES, AND TO ADJUST ITS ASSETS AND

LIABILITIES RELATED TO UNRECOGNIZED TAX BENEFITS AND ACCRUED INTEREST AND

PENALTIES ACCORDINGLY. AS OF DECEMBER 31, 2012, THE FESTIVAL DETERMINED

THAT THERE ARE NO MATERIAL UNRECOGNIZED TAX BENEFITS TO REPORT. THE

FESTIVAL FILES FEDERAL AND MASSACHUSETTS INFORMATIONAL RETURNS. THESE

RETURNS ARE GENERALLY SUBJECT TO EXAMINATION BY TAX AUTHORITIES FOR THE

Schedule D (Form 990) 2012

Part XIII Supplemental Information (continued)

LAST THREE YEARS.

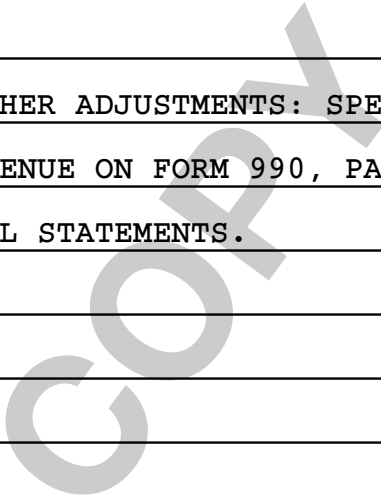
PART XI, LINE 2D - OTHER ADJUSTMENTS:

SEE BELOW FOR EXPLANATION - PART XI, LINE 2D - OTHER
ADJUSTMENTS:

PART XII, LINE 2D - OTHER ADJUSTMENTS:

SEE BELOW FOR EXPLANATION - PART XI, LINE 2D - OTHER
ADJUSTMENTS:

PART XI AND XII, LINE 2D - OTHER ADJUSTMENTS: SPECIAL EVENT EXPENSES ARE
NETTED WITH SPECIAL EVENT REVENUE ON FORM 990, PART VIII, BUT ARE SHOWN
GROSS ON THE AUDITED FINANCIAL STATEMENTS.



Part II Fundraising Events. Complete if the organization answered "Yes" to Form 990, Part IV, line 18, or reported more than \$15,000 of fundraising event contributions and gross income on Form 990-EZ, lines 1 and 6b. List events with gross receipts greater than \$5,000.

		(a) Event #1	(b) Event #2	(c) Other events	(d) Total events (add col. (a) through col. (c))
		SPRING EVENT	GALA	NONE	
		(event type)	(event type)	(total number)	
Revenue	1 Gross receipts	9,903.	84,276.		94,179.
	2 Less: Contributions		22,506.		22,506.
	3 Gross income (line 1 minus line 2)	9,903.	61,770.		71,673.
Direct Expenses	4 Cash prizes				
	5 Noncash prizes				
	6 Rent/facility costs	10,914.	23,488.		34,402.
	7 Food and beverages				
	8 Entertainment				
	9 Other direct expenses	2,127.	23,921.		26,048.
	10 Direct expense summary. Add lines 4 through 9 in column (d)				(60,450)
11 Net income summary. Combine line 3, column (d), and line 10				11,223.	

Part III Gaming. Complete if the organization answered "Yes" to Form 990, Part IV, line 19, or reported more than \$15,000 on Form 990-EZ, line 6a.

		(a) Bingo	(b) Pull tabs/instant bingo/progressive bingo	(c) Other gaming	(d) Total gaming (add col. (a) through col. (c))
		1 Gross revenue			
Direct Expenses	2 Cash prizes				
	3 Noncash prizes				
	4 Rent/facility costs				
	5 Other direct expenses				
	6 Volunteer labor	<input type="checkbox"/> Yes _____ % <input type="checkbox"/> No	<input type="checkbox"/> Yes _____ % <input type="checkbox"/> No	<input type="checkbox"/> Yes _____ % <input type="checkbox"/> No	
7 Direct expense summary. Add lines 2 through 5 in column (d)				(_____)	
8 Net gaming income summary. Combine line 1, column d, and line 7					

9 Enter the state(s) in which the organization operates gaming activities: _____
a Is the organization licensed to operate gaming activities in each of these states? Yes No
b If "No," explain: _____

10a Were any of the organization's gaming licenses revoked, suspended or terminated during the tax year? Yes No
b If "Yes," explain: _____

SCHEDULE O
(Form 990 or 990-EZ)

Department of the Treasury
Internal Revenue Service

Supplemental Information to Form 990 or 990-EZ

Complete to provide information for responses to specific questions on
Form 990 or 990-EZ or to provide any additional information.
▶ Attach to Form 990 or 990-EZ.

OMB No. 1545-0047

2012

Open to Public
Inspection

Name of the organization

THE BOSTON JEWISH FILM FESTIVAL, INC.

Employer identification number

04-3414850

FORM 990, PART I, LINE 1, DESCRIPTION OF ORGANIZATION MISSION:

ANNUAL FESTIVAL AND THROUGHOUT THE YEAR.

THROUGH FEATURES, SHORTS, DOCUMENTARIES, AND CONVERSATIONS WITH
VISITING ARTISTS, THE FESTIVAL EXPLORES JEWISH IDENTITY, THE CURRENT
JEWISH EXPERIENCE AND THE RICHNESS OF JEWISH CULTURE IN RELATION TO A
DIVERSE MODERN WORLD.

FORM 990, PART VI, SECTION B, LINE 11: THE 990 AND THE AUDITED FINANCIAL
STATEMENTS ARE PRESENTED TO THE AUDIT COMMITTEE AND THEN TO THE FULL BOARD.
THE BOARD MUST THEN VOTE TO ACCEPT THE FINANCIAL STATEMENTS AND 990.

FORM 990, PART VI, SECTION B, LINE 12C: EACH BOARD MEMBER SIGNS A CONFLICT
OF INTEREST STATEMENT EACH YEAR. TO ENSURE COMPLIANCE, WE DO NOT HIRE ANY
BOARD MEMBERS OR THEIR RELATIVES AS VENDORS, OR ACCEPT DONATIONS THAT
REQUIRE PERFORMANCE EXCEPT FOR ESTABLISHED FESTIVAL SPONSORSHIPS.

FORM 990, PART VI, SECTION B, LINE 15: WHEN THE EXECUTIVE DIRECTOR WAS
HIRED, AN EXTERNAL HUMAN RESOURCES CONSULTANT RESEARCHED SALARIES FOR
COMPARABLE ROLES. SUBSEQUENTLY, THE BOARD HAS DETERMINED THE EXECUTIVE
DIRECTOR'S AND ARTISTIC DIRECTOR'S SALARIES BASED ON AN ANNUAL PERFORMANCE
REVIEW PROCESS. OTHER EMPLOYEES' SALARIES ARE DETERMINED BY THE EXECUTIVE
DIRECTOR AND ARTISTIC DIRECTOR, WITH APPROVAL FROM THE BOARD OF DIRECTORS
AS PART OF THE BUDGET PROCESS.

FORM 990, PART VI, SECTION C, LINE 19: THE ORGANIZATION MAKES ITS

Name of the organization THE BOSTON JEWISH FILM FESTIVAL, INC.	Employer identification number 04-3414850
--	---

GOVERNING DOCUMENTS, CONFLICT OF INTEREST POLICY, AND FINANCIAL STATEMENTS AVAILABLE TO THE PUBLIC UPON REQUEST. THE 990 IS CURRENTLY AVAILABLE ON THE MASSACHUSETTS ATTORNEY GENERAL WEBSITE AND GUIDESTAR.ORG.

FORM 990, PART IX, LINE 24E, ALL OTHER FUNCTIONAL EXPENSES:

BOX OFFICE FEES:

PROGRAM SERVICE EXPENSES	17,556.
MANAGEMENT AND GENERAL EXPENSES	0.
FUNDRAISING EXPENSES	0.
TOTAL EXPENSES	17,556.

PUBLICITY:

PROGRAM SERVICE EXPENSES	16,325.
MANAGEMENT AND GENERAL EXPENSES	0.
FUNDRAISING EXPENSES	0.
TOTAL EXPENSES	16,325.

VISITING ARTISTS:

PROGRAM SERVICE EXPENSES	15,050.
MANAGEMENT AND GENERAL EXPENSES	0.
FUNDRAISING EXPENSES	0.
TOTAL EXPENSES	15,050.

MAINTENANCE:

PROGRAM SERVICE EXPENSES	9,684.
MANAGEMENT AND GENERAL EXPENSES	534.
FUNDRAISING EXPENSES	1,603.
TOTAL EXPENSES	11,821.

Name of the organization THE BOSTON JEWISH FILM FESTIVAL, INC.	Employer identification number 04-3414850
--	---

VENUE RENTAL:

PROGRAM SERVICE EXPENSES	9,700.
MANAGEMENT AND GENERAL EXPENSES	0.
FUNDRAISING EXPENSES	0.
TOTAL EXPENSES	9,700.

CREDIT CARD FEES:

PROGRAM SERVICE EXPENSES	6,854.
MANAGEMENT AND GENERAL EXPENSES	378.
FUNDRAISING EXPENSES	1,134.
TOTAL EXPENSES	8,366.

DIRECT MAILINGS:

PROGRAM SERVICE EXPENSES	0.
MANAGEMENT AND GENERAL EXPENSES	0.
FUNDRAISING EXPENSES	6,689.
TOTAL EXPENSES	6,689.

POSTAGE:

PROGRAM SERVICE EXPENSES	3,968.
MANAGEMENT AND GENERAL EXPENSES	219.
FUNDRAISING EXPENSES	657.
TOTAL EXPENSES	4,844.

EQUIPMENT RENTALS:

PROGRAM SERVICE EXPENSES	3,086.
MANAGEMENT AND GENERAL EXPENSES	0.

Name of the organization THE BOSTON JEWISH FILM FESTIVAL, INC.	Employer identification number 04-3414850
--	---

FUNDRAISING EXPENSES 0.

TOTAL EXPENSES 3,086.

FESTIVAL EVENTS:

PROGRAM SERVICE EXPENSES 1,994.

MANAGEMENT AND GENERAL EXPENSES 0.

FUNDRAISING EXPENSES 0.

TOTAL EXPENSES 1,994.

MISCELLANEOUS:

PROGRAM SERVICE EXPENSES 837.

MANAGEMENT AND GENERAL EXPENSES 41.

FUNDRAISING EXPENSES 139.

TOTAL EXPENSES 1,017.

TOTAL OTHER EXPENSES ON FORM 990, PART IX, LINE 24E, COL A 96,448.

FORM 990, PART XII, LINE 2C:

THE ORGANIZATION'S FINANCE COMMITTEE ASSUMES THE RESPONSIBILITY FOR
 OVERSIGHT OF THE AUDIT OF ITS FINANCIAL STATEMENTS AND SELECTION OF THE
 INDEPENDENT ACCOUNTANT. THIS PROCESS HAS NOT CHANGED FROM LAST YEAR.

Application for Extension of Time To File an Exempt Organization Return

▶ **File a separate application for each return.**

- If you are filing for an **Automatic 3-Month Extension**, complete only **Part I** and check this box **X**
- If you are filing for an **Additional (Not Automatic) 3-Month Extension**, complete only **Part II** (on page 2 of this form).

Do not complete Part II unless you have already been granted an automatic 3-month extension on a previously filed Form 8868.

Electronic filing (e-file) - You can electronically file Form 8868 if you need a 3-month automatic extension of time to file (6 months for a corporation required to file Form 990-T), or an additional (not automatic) 3-month extension of time. You can electronically file Form 8868 to request an extension of time to file any of the forms listed in Part I or Part II with the exception of Form 8870, Information Return for Transfers Associated With Certain Personal Benefit Contracts, which must be sent to the IRS in paper format (see instructions). For more details on the electronic filing of this form, visit www.irs.gov/efile and click on *e-file for Charities & Nonprofits*.

Part I Automatic 3-Month Extension of Time. Only submit original (no copies needed).

A corporation required to file Form 990-T and requesting an automatic 6-month extension - check this box and complete Part I only

All other corporations (including 1120-C filers), partnerships, REMICs, and trusts must use Form 7004 to request an extension of time to file income tax returns.

Type or print	Name of exempt organization or other filer, see instructions. THE BOSTON JEWISH FILM FESTIVAL, INC.	Employer identification number (EIN) or 04-3414850
File by the due date for filing your return. See instructions.	Number, street, and room or suite no. If a P.O. box, see instructions. 1001 WATERTOWN STREET	Social security number (SSN)
	City, town or post office, state, and ZIP code. For a foreign address, see instructions. WEST NEWTON, MA 02465	

Enter the Return code for the return that this application is for (file a separate application for each return) 01

Application Is For	Return Code	Application Is For	Return Code
Form 990 or Form 990-EZ	01	Form 990-T (corporation)	07
Form 990-BL	02	Form 1041-A	08
Form 4720 (individual)	03	Form 4720	09
Form 990-PF	04	Form 5227	10
Form 990-T (sec. 401(a) or 408(a) trust)	05	Form 6069	11
Form 990-T (trust other than above)	06	Form 8870	12

JAYMIE SAKS, EXECUTIVE DIRECTOR

- The books are in the care of ▶ **1001 WATERTOWN STREET - WEST NEWTON, MA 02465**
 Telephone No. ▶ **617-244-9899** FAX No. ▶ _____
- If the organization does not have an office or place of business in the United States, check this box
- If this is for a Group Return, enter the organization's four digit Group Exemption Number (GEN) _____. If this is for the whole group, check this box . If it is for part of the group, check this box and attach a list with the names and EINs of all members the extension is for.

1 I request an automatic 3-month (6 months for a corporation required to file Form 990-T) extension of time until **AUGUST 15, 2013**, to file the exempt organization return for the organization named above. The extension is for the organization's return for:
 ▶ calendar year **2012** or
 ▶ tax year beginning _____, and ending _____.

2 If the tax year entered in line 1 is for less than 12 months, check reason: Initial return Final return
 Change in accounting period

3a If this application is for Form 990-BL, 990-PF, 990-T, 4720, or 6069, enter the tentative tax, less any nonrefundable credits. See instructions.	3a	\$	0.
b If this application is for Form 990-PF, 990-T, 4720, or 6069, enter any refundable credits and estimated tax payments made. Include any prior year overpayment allowed as a credit.	3b	\$	0.
c Balance due. Subtract line 3b from line 3a. Include your payment with this form, if required, by using EFTPS (Electronic Federal Tax Payment System). See instructions.	3c	\$	0.

Caution. If you are going to make an electronic fund withdrawal with this Form 8868, see Form 8453-EO and Form 8879-EO for payment instructions.