

Professional Staff



Gerald J. Dolan, Jr.

Music Director & Intermezzo Orchestra Conductor
Director of Fine Arts, Ipswich Public Schools
Professor of Music, Gordon College



Dr. Walter Pavasaris

Symphony Orchestra Conductor
Professor of Music, Boston Conservatory at
Berklee College of Music & Gordon College



Dr. David Rox

Wind Ensemble Conductor
Professor of Music & Director of Bands,
Gordon College



Julie Parsons

Prelude String Ensemble Conductor
Strings Director, Marblehead Public Schools



Michael Coelho

Overture String Ensemble Conductor
Performer & Orchestra Director,
Ipswich Public Schools



Trisha Craig

Flute Choirs Conductor
Performer, educator & flute clinician



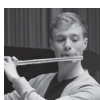
Trudy Larson

NMYO Founder & String/Chamber Music Director
Founder & Executive Director, Up with Music
Suzuki violin/viola instructor



Terri L. Murphy

Executive Director



Nicholas Southwick

Music Coordinator

Board of Directors

Tina Strunk, President
Michelle Boyle, Vice President
Denise Greaves, Secretary / Clerk
Melissa Montello, Treasurer
Susan Henke

Advisory Board

Lisa Bernier-Moulton
Matthew Ginsburg
Michael Higgins
Trudy Larson
Mary Ann Lidrbauch
Carol Peckins
Andrew Soll
Jane Trott



2017 - 2018 Concert Season

- ◆ **Nov. 19, 2017 - Thanksgiving Food Basket Benefit Concert**
3:00 pm Performances by Prelude, Overture, Flute Choir & Intermezzo Orchestra
First Church Ipswich, One Meeting House Green, Ipswich
- ◆ **Dec. 10, 2017 - An Afternoon of Winter Concerts**
2:30 pm Performances by Prelude, Overture, Flute Choir & Intermezzo Orchestra
5:00 pm Performances by Select Flute Choir, Wind Ensemble & Symphony Orchestra
Dolan Performing Arts Center, 134 High St., Ipswich
- ◆ **March 4, 2018 - Chamber Music Concert**
3:00 pm Performances by NMYO Chamber Music Ensembles
*Maple Street Congregational Church
90 Maple St., Danvers, MA*
- ◆ **March 10, 2018 - Flute Ensembles in Concert**
3:00 pm Performances Flute Choir & Select Flute Choir
*The Congregational Church of Topsfield
9 East Common St., Topsfield*
- ◆ **March 11, 2018 - Honors Chamber Music Concert**
2:30 pm Performances by Honors Chamber Ensembles & Select Soloists
Shalin Liu Performance Center, 37 Main St., Rockport
- ◆ **March 17 & 18, 2018 - Outreach Concerts**
Times Vary A weekend of Chamber Music performances
Nursing homes & community centers in MA
- ◆ **May 12, 2018 - An Afternoon of Spring Concerts**
2:30 pm Performances by Prelude, Overture, Flute Choir & Intermezzo Orchestra
5:00 pm Performances by Select Flute Choir, Wind Ensemble & Symphony Orchestra
*Manchester-Essex High School
36 Lincoln St., Manchester, MA*
- ◆ **May 14, 2018 - Council on Aging Outreach Concert**
4:30 pm Performances by Prelude, Overture & Intermezzo
First Church Ipswich, One Meeting House Green, Ipswich