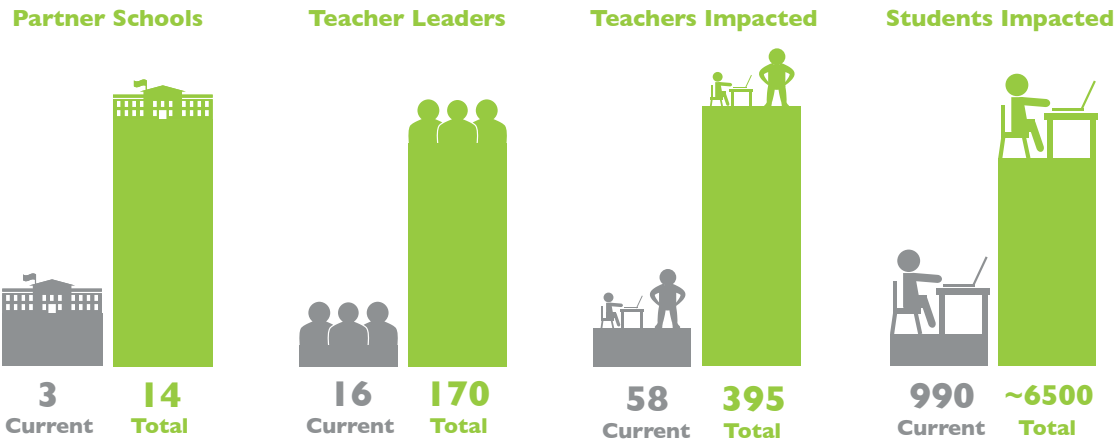


Massachusetts By The Numbers

T3 Teacher Leaders are multiplying the number of student lives they impact by taking responsibility for leading instructional changes across their grade level.

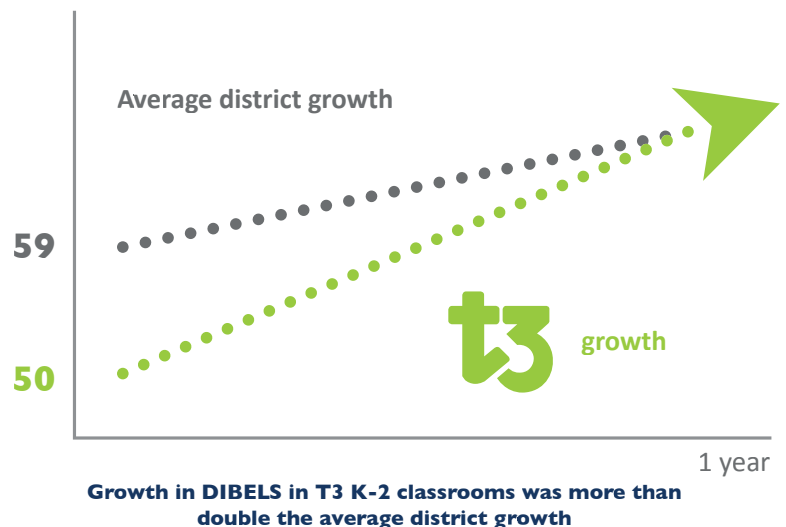
The T3 Initiative is a **partnership** with low-performing schools to recruit, develop, and support teacher leaders who lead teams of their colleagues in **data-driven, collaborative decision making to improve teacher practice and student outcomes**. **Our impact is measured by the student outcomes of all students affected by T3 Teacher Leaders and their teams**



Closing the Gap

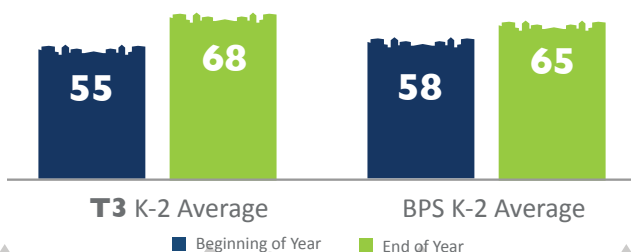


Nationally, for students in T3 schools, the growth in DIBELS results was **more than double** the average district growth. This growth helped T3 students close the achievement gap with the combined district average.



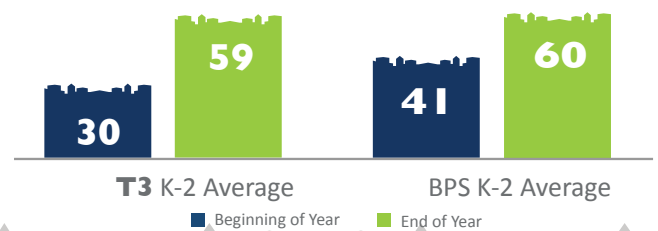
2014-15 Kindergarten to Grade 2: DIBELS 13 Points

Growth from beginning of the year to the end of the year



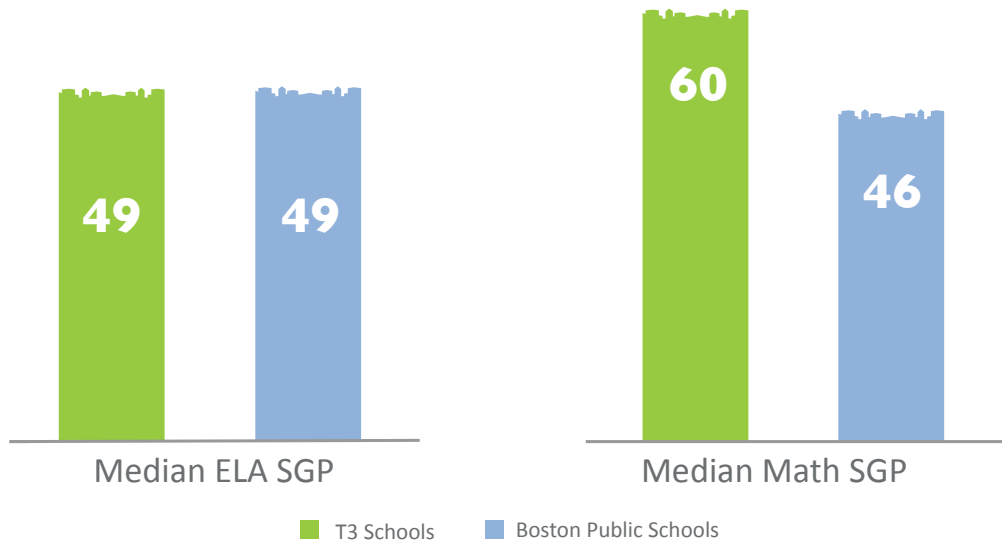
2014-15 Kindergarten to Grade 2: TRC 29 Points

Growth from beginning of the year to the end of the year



T3 Grades 3-8

Grade 4-5 PARCC 2014-15 SGP



On the PARCC assessment, grade teams led by T3 Teacher Leaders in Boston matched the district SGP in ELA. In Math, grade teams led by T3 Teacher Leaders exceeded the district SGP by 14 points.*

*School aggregate data is only available as of December 21, 2015, so to reflect performance of all three T3 schools in BPS, an average of the three median values was used.

4 T3 schools

The Massachusetts State DOE has now moved a total of four

T3 partner schools to Level One, the highest level of growth in the state.

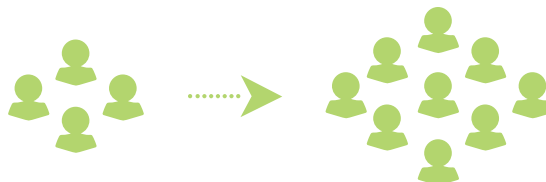


Two partner schools

were nominated for the prestigious School on the Move prize and the Trotter (T3 Cohort 1) won.

Across Our Regions

95% of TL's "agree" or "strongly agree" that their experience as a T3 Teacher Leader has developed them to facilitate the learning of their colleagues.



88% of teachers supported by T3 Teacher Leaders "agree" or "strongly agree" that their T3 Teacher Leader has had a positive impact on their practice.

